

## MANDATORY DISCLOSURE

Mandatory Disclosure Updated on:

1. **AICTE File No. :** 06/07/MS/Engg./2008/51, Date July29,2008  
**Date & Period of last approval:** 07/04/2015 (2015-16)
2. **Name of Institution :** Abha Gaikwad- Patil College of Engineering (AGPCE)  
**Address of the Institution:** Kh. No. 81/1, Mohgaon  
(P.S.K.-74), Wardha Road, Nagpur-441 108

**City & Pin Code:** Nagpur – 441 108

**State:** Maharashtra

**Latitude:** 20 degree 7 minutes north

**Longitude:** 79 degree 7 minutes east

**Telephone:** 07103- 645412

**Fax No. :** 0712-2240656

**Office hours at the Institution:** 10.00 am to 5.00 pm

**Academic hours at the Institute:** 10.00 am to 5.00 pm

**E-Mail :** [principal@agpce.com](mailto:principal@agpce.com)

[vidarbhabuss@yahoo.co.in](mailto:vidarbhabuss@yahoo.co.in)

**Website:** [www.agpce.com](http://www.agpce.com)

**Nearest Railway Station:** Nagpur 20 km

**Nearest Airport :** Nagpur 12 km

3. **Type of Institution:** Private-Self Finance  
**Category (1) of the Institution:** Non Minority  
**Category (2) of the Institution:** Co-Ed
4. **Name of the Organization running the Institute:** Vidarbha Bahu-uddeshiya Shikshan Sanstha  
**Type of Organization:** Society  
**Address of the Organization:** Ojaswini Complex, IT Park Road, 17, Gayatri Nagar,Nagpur – 440 022  
**Registered with:** Maharashtra Society Act  
**Registration Date:** 22/11/1999  
**Website of the Organization:** -
5. **Name of the affiliating University:** Rashtrasant Tukdoji Maharaj Nagpur University  
**Address :** Civil Line, Amravati Road, Nagpur.  
**Website:** [www.nagpuruniversity.org](http://www.nagpuruniversity.org)  
**Latest affiliation period:** 2015-16 to 2017-18

**6. Name of the Principal/Director:** **Dr. Prashant Kadu**  
**Exact Designation:** Principal  
**Phone number with STD code:** 07103 -645412  
**FAX number with STD code:** 0712-2240656  
**Email:** [principal@agpce.com](mailto:principal@agpce.com)



**Highest Degree:** Doctorate  
**Field of specialization:** Mechanical Engineering

### Qualifications with Class/Grade:

UG	PG	Ph D
BE (Electrical Engineering)	M. Tech (Design of Machin and Mechanism)	Mechanical Engineering
First Class	Gold medalist	NA

### Total experience in years:

Teaching	Industry	Research
19	5	4

### Paper Published in Journals :

National	International
10	15

## 7. Governing body members

Sr. No.	Name of the Member	Designation	Education Qualification
1.	Mr. Sharad Wamanrao Patil	President	M.A. B.J.
2.	Mr. Mohan Ramrao Gaikwad	Secretary	Ph. D. M.Sc.(Maths)
3.	Mr. Sandeep Ramrao Gaikwad	Treasurer	M. Tech
4.	Mr. Ramrao Tulsiramji Gaikwad	Member	HSc.
5.	Mrs. Anjali Gaikwad-Patil	Member	M.A. B.J.
6.	Mr. Vinod Ramrao Gaikwad	Member	Diploma in Ele. Engg.
7.	Mrs. Vandana Ramesh Sahastrabudhe	Member	B.A.

**Frequency of meeting & date of last meeting:** Monthly & last meeting held on 25 Oct. 2015(Sunday)

## 8. Department-wise Data and Pass % of 2012-13:

Sr No	Course	Level	1 <sup>st</sup> Year of Approval by Council	Year	Sem	Sanctioned Intake	Cut off Marks General Quota	% of Students with 1 <sup>st</sup> Class	Students Placed	Average Pay	Students opted for higher Studies	Accreditation Status of the course
1	ME	UG	2011-12	2012	3 <sup>rd</sup> Winter-12	120		3	0		Nil	Not Eligible
2	ME	UG	2011-12	2013	4 <sup>th</sup> Summer-13	120		3	0		Nil	Not Eligible

Department-wise Data and Pass % of 2013-14:

Sr No	Course	Level	1 <sup>st</sup> Year of Approval by Council	Year	Sem	Sanctioned Intake	Cut off Marks General Quota	% of Students with 1 <sup>st</sup> Class	Students Placed	Average Pay	Students opted for higher Studies	Accreditation Status of the course
1	ME	UG	2011-12	2013	3 <sup>rd</sup> Winter -13	120		14	0		Nil	Not Eligible
2	ME	UG	2011-12	2013	5 <sup>th</sup> Winter -13	120		10	0		Nil	Not Eligible
3	ME	UG	2011-12	2014	4 <sup>th</sup> Summer -14	120		5	0		Nil	Not Eligible
4	ME	UG	2011-12	2014	6 <sup>th</sup> Summer -14	120		6	0		Nil	Not Eligible

Department-wise Data and Pass % of 2014-15:

Sr No	Course	Level	1 <sup>st</sup> Year of Approval by Council	Year	Sem	Sanctioned Intake	Cut off Marks General Quota	% of Students with 1 <sup>st</sup> Class	Students Placed	Average Pay	Students opted for higher Studies	Accreditation Status of the course
1	ME	UG	2010-11	2014	3 <sup>rd</sup> Winter -2014	120		27	0		Nil	Not Eligible
2	ME	UG	2011-12	2014	5 <sup>th</sup> Winter-2014	120		35	0		Nil	Not Eligible
3	ME	UG	2011-12	2014	7 <sup>th</sup> Winter-14	120		16	0		Nil	Not Eligible
4	ME	UG	2011-12	2015	4 <sup>th</sup> Summer-15	120		20	0		Nil	Not Eligible
5	ME	UG	2011-12	2015	6 <sup>th</sup> Summer-15	120		19	0		Nil	Not Eligible
6	ME	UG	2011-12	2015	8 <sup>th</sup> Summer-15	120		18	0	2	Nil	Not Eligible

**Department wise Data and pass% of 2012-13:**

Sr No	Course	Level	1 <sup>st</sup> year of approval by council	Year	Sem	Sanctioned Intake	Cut off Marks	% Students passing out with distinction	% Students passing out with first class	Students Placed	Average pay package Rs./Year	Students opted for higher studies	Accreditation Status of the Course
1	BE Mechanical Engineering	UG	2011-12	II	III	120		0	3	NA	NA	NA	NA
2				II	IV	120		0	3	NA	NA	NA	NA

**Department wise Data and pass% of 2013-14:**

Sr No	Course	Level	1 <sup>st</sup> year of approval by council	Year	Sem	Sanctioned Intake	Cut off Marks	% Students passing out with distinction	% Students passing out with first class	Students Placed	Average pay package Rs./Year	Students opted for higher studies	Accreditation Status of the Course
1	BE Mechanical Engineering	UG	2011-12	II	III	60		0	14	NA	NA	NA	NA
2				II	IV	60		0	10	NA	NA	NA	NA
3				III	V	60		0	5	NA	NA	NA	NA
4				III	VI	60		0	6	NA	NA	NA	NA

**Department wise Data and pass% of 2014-15:**

Sr No	Course	Level	1 <sup>st</sup> year of approval by council	Year	Sem	Sanctioned Intake	Cut off Marks	% Students passing out with distinction	% Students passing out with first class	Students Placed	Average pay package Rs./Year	Students opted for higher studies	Accreditation Status of the Course
1	BE Mechanical Engineering	UG	2011-12	II	III	120		0	27	NA	NA	NA	NA
2				II	IV	120		0	35	NA	NA	NA	NA
3				III	V	60		0	16	NA	NA	NA	NA
4				III	VI	60		0	20	NA	NA	NA	NA
5				IV	VII	60		0	19	NA	NA	NA	NA
6				IV	VIII	60		4	18	5	1,40,000/-	1	NA

**Department wise Data and pass% of 2013-14:**

Sr No	Course	Level	1 <sup>st</sup> year of approval by council	Year	Sem	Sanctioned Intake	Cut off Marks	% Students passing out with distinction	% Students passing out with first class	Students Placed	Average pay package Rs./Year	Students opted for higher studies	Accreditation Status of the Course
1	M. Tech Machine Engineering Design	PG	2013-14	I	I	24		0	14	NA	NA	NA	NA
2				I	II	24		3	17	NA	NA	NA	NA

**Department wise Data and pass% of 2014-15:**

Sr No	Course	Level	1 <sup>st</sup> year of approval by council	Year	Sem	Sanctioned Intake	Cut off Marks	% Students passing out with distinction	% Students passing out with first class	Students Placed	Average pay package Rs./Year	Students opted for higher studies	Accreditation Status of the Course
1	M. Tech Machine Engineering Design	PG	2014-15	I	I	24		3	17	NA	NA	NA	NA
2				I	II	24		2	25	NA	NA	NA	NA
3				II	III	24		8	17				

Department wise Data and pass% of 2014:

Sr No	Course	Level	1 <sup>st</sup> year of approval by council	Year	Sem	Sanctioned Intake	Cut off Marks	% Students passing out with distinction	% Students passing out with first class	Students Placed	Average pay package Rs./Year	Students opted for higher studies	Accreditation Status of the Course	
1	BE Mechanical Engineering	UG	2011-12	II	III	120		0	27	NA	NA	NA	NA	
2				II	IV	120		0	35	NA	NA	NA	NA	NA
3				III	V	120		0	16	NA	NA	NA	NA	NA
4				III	VI	120		0	20	NA	NA	NA	NA	NA
5				IV	VII	120		0	19	NA	NA	NA	NA	NA
6				IV	VIII	120		4	18	5	1,40,000/-	1	NA	

Department wise Data and pass% of 2013-14:

Sr No	Course	Level	1 <sup>st</sup> year of approval by council	Year	Sem	Sanctioned Intake	Cut off Marks	% Students passing out with distinction	% Students passing out with first class	Students Placed	Average pay package Rs./Year	Students opted for higher studies	Accreditation Status of the Course
1	M. Tech Machine Engineering Design	PG	2013-14	I	I	24		0	14	NA	NA	NA	NA
2				I	II	24		3	17	NA	NA	NA	NA

Department wise Data and pass% of 2014-15:

Sr No	Course	Level	1 <sup>st</sup> year of approval by council	Year	Sem	Sanctioned Intake	Cut off Marks	% Students passing out with distinction	% Students passing out with first class	Students Placed	Average pay package Rs./Year	Students opted for higher studies	Accreditation Status of the Course
1	M. Tech Machine Engineering Design	PG	2013-14	I	I	24		3	22	NA	NA	NA	NA
2				I	II	24		2	25	NA	NA	NA	NA
3				II	III	24		8	17	NA	NA	NA	NA

**Department-wise Data and Pass % of 2011-12:**

Sr No	Course	Level	1 <sup>st</sup> Year of Approval by Council	Year	Sem	Sanctioned Intake	Cut off Marks General Quota	% of Students with 1 <sup>st</sup> Class	Students Placed	Average Pay	Students opted for higher Studies	Accreditation Status of the course
1	EE	UG	2010-11	2011	3 <sup>rd</sup> Winter-11	60		1	0		Nil	Not Eligible
2	EE	UG	2010-11	2012	4 <sup>th</sup> Summer-12	60		6	0		Nil	Not Eligible

**Department-wise Data and Pass % of 2012-13:**

Sr No	Course	Level	1 <sup>st</sup> Year of Approval by Council	Year	Sem	Sanctioned Intake	Cut off Marks General Quota	% of Students with 1 <sup>st</sup> Class	Students Placed	Average Pay	Students opted for higher Studies	Accreditation Status of the course
1	EE	UG	2010-11	2012	3 <sup>rd</sup> Winter-12	60		4	0		Nil	Not Eligible
2	EE	UG	2010-11	2012	5 <sup>th</sup> Winter-12	60		3	0		Nil	Not Eligible
3	EE	UG	2010-11	2013	4 <sup>th</sup> Summer-13	60		7	0		Nil	Not Eligible
4	EE	UG	2010-11	2013	6 <sup>th</sup> Summer-13	60		5	0		Nil	Not Eligible

**Department-wise Data and Pass % of 2013-14:**

Sr No	Course	Level	1 <sup>st</sup> Year of Approval by Council	Year	Sem	Sanctioned Intake	Cut off Marks General Quota	% of Students with 1 <sup>st</sup> Class	Students Placed	Average Pay	Students opted for higher Studies	Accreditation Status of the course
1	EE	UG	2010-11	2013	3 <sup>rd</sup> Winter-2013	120		2	0		Nil	Not Eligible
2	EE	UG	2010-11	2013	5 <sup>th</sup> Winter-2013	60		4	0		Nil	Not Eligible
3	EE	UG	2010-11	2013	7 <sup>th</sup> Winter-13	60		1	0		Nil	Not Eligible
4	EE	UG	2010-	201	4 <sup>th</sup>	120		9	0		Nil	Not Eligible



			11	4	Summe r-14							
5	EE	UG	2010- 11	201 4	6 <sup>th</sup> Summe r-14	60		5	0		Nil	Not Eligible
6	EE	UG	2010- 11	201 4	8 <sup>th</sup> Summe r-14	60		4	0	2	1,20,000 /-	Not Eligible

**Department-wise Data and Pass % of 2014-15:**

Sr No	Cours e	Lev el	1 <sup>st</sup> Year of Approv al by Councu l	Yea r	Sem	Sanction ed Intake	Cut off Marks Gener al Quota	% of Studen ts with 1 <sup>st</sup> Class	Studen ts Placed	Averag e Pay	Students opted for higher Studies	Accreditati on Status of the course
1	EE	UG	2010- 11	201 4	3 <sup>rd</sup> Winter- 14	120		4	0		Nil	Not Eligible
2	EE	UG	2010- 11	201 4	5 <sup>th</sup> Winter- 14	120		4	0		Nil	Not Eligible
3	EE	UG	2010- 11	201 4	7 <sup>th</sup> Winter- 14	60		12	0		Nil	Not Eligible
4	EE	UG	2010- 11	201 5	4 <sup>th</sup> Summe r -15	120		15	0		Nil	Not Eligible
5	EE	UG	2010- 11	201 5	6 <sup>th</sup> Summe r-15	120		28	0		Nil	Not Eligible
6	EE	UG	2010- 11	201 5	8 <sup>th</sup> Summe r -15	60		21	0	4	1,85,000 /-	Not Eligible

**Department wise Data and pass% of 2011-12:**

Sr No	Course	Level	1 <sup>st</sup> year of approval by council	Year	Sem	Sanctioned Intake	Cut off Marks	% Students passing out with distinction	% Students passing out with first class	Students Placed	Average pay package Rs./Year	Students opted for higher studies	Accreditation Status of the Course
1	BE Electrical Engineering	UG	2010-11	II	III	60		0	1	NA	NA	NA	NA
2				II	IV	60		0	6	NA	NA	NA	NA

**Department wise Data and pass% of 2012-13:**

Sr No	Course	Level	1 <sup>st</sup> year of approval by council	Year	Sem	Sanctioned Intake	Cut off Marks	% Students passing out with distinction	% Students passing out with first class	Students Placed	Average pay package Rs./Year	Students opted for higher studies	Accreditation Status of the Course
1	BE Electrical Engineering	UG	2010-11	II	III	60		0	4	NA	NA	NA	NA
2				II	IV	60		0	7	NA	NA	NA	NA
3				III	V	60		0	3	NA	NA	NA	NA
4				III	VI	60		0	5	NA	NA	NA	NA

**Department wise Data and pass% of 2013-14:**

Sr No	Course	Level	1 <sup>st</sup> year of approval by council	Year	Sem	Sanctioned Intake	Cut off Marks	% Students passing out with distinction	% Students passing out with first class	Students Placed	Average pay package Rs./Year	Students opted for higher studies	Accreditation Status of the Course
1	BE Electrical Engineering	UG	2010-11	II	III	120		0	3	NA	NA	NA	NA
2				II	IV	120		0	6	NA	NA	NA	NA
3				III	V	60		0	4	NA	NA	NA	NA
4				III	VI	60		0	5	NA	NA	NA	NA
5				IV	VII	60		0	1	NA	NA	NA	NA
6				IV	VIII	60		0	14	1	1,20,000/-	1	NA

**Department wise Data and pass% of 2013-14:**

Sr No	Course	Level	1 <sup>st</sup> year of approval by council	Year	Sem	Sanctioned Intake	Cut off Marks	% Students passing out with distinction	% Students passing out with first class	Students Placed	Average pay package Rs./Year	Students opted for higher studies	Accreditation Status of the Course
1	M. Tech Integrated Power System	PG	2013-14	I	I	24		1	12	NA	NA	NA	NA
2				I	II	24		2	10	NA	NA	NA	NA

**Department wise Data and pass% of 2014:**

Sr No	Course	Level	1 <sup>st</sup> year of approval by council	Year	Sem	Sanctioned Intake	Cut off Marks	% Students passing out with distinction	% Students passing out with first class	Students Placed	Average pay package Rs./Year	Students opted for higher studies	Accreditation Status of the Course
1	BE Electrical Engineering	UG	2010-11	II	III	120		0	4	NA	NA	NA	NA
2				II	IV	120		0	15	NA	NA	NA	NA
3				III	V	120		0	4	NA	NA	NA	NA
4				III	VI	120		0	28	NA	NA	NA	NA
5				IV	VII	60		0	12	NA	NA	NA	NA
6				IV	VIII	60		14	7	1	1,20,000/-	1	NA

**Department wise Data and pass% of 2014-15:**

Sr No	Course	Level	1 <sup>st</sup> year of approval by council	Year	Sem	Sanctioned Intake	Cut off Marks	% Students passing out with distinction	% Students passing out with first class	Students Placed	Average pay package Rs./Year	Students opted for higher studies	Accreditation Status of the Course
1	M.Tech Integrated Power System	PG	2013-14	I	I	24		0	0	NA	NA	NA	NA
2				I	II	24		0	6	NA	NA	NA	NA
3				II	III	24		2	9	NA	NA	NA	NA

### Department wise Data and pass % of2012

S.No.	Course	Level	1 <sup>st</sup> year of approval by Council	Year	Sem	Sanctioned Intake	Cut off marks General quota	% of Students passing out with Distinction	% of Students with 1st Class	Students Placed	Average pay package Rs./year	Students opted for higher studies	Accreditation status of the course
8	ECE	UG		2012	3 <sup>rd</sup> Winter-12	120	60	0	12.5	00	-	Nil	NotEligible
9	ECE	UG		2012	5 <sup>th</sup> Winter-12	120	60	0	18.25	00	-	Nil	NotEligible
	ECE	UG		2012	7 <sup>th</sup> Winter-12	120	60	0	81.51	00	-	Nil	NotEligible
10	ECE	UG		2012	4 <sup>th</sup> Summer-12	120	60	0	82.60	00	-	Nil	NotEligible
11	ECE	UG		2012	6 <sup>th</sup> Summer-12	120	60	0	93.75	00	-	Nil	NotEligible
12	ETRX	UG		2012	3 <sup>rd</sup> Winter-12	60	53	0	00	00	-	Nil	NotEligible
13	ETRX	UG		2012	5 <sup>th</sup> Winter-12	60	53	0	33.33	00	-	Nil	NotEligible
14	ETRX	UG		2012	4 <sup>th</sup> Summer-12	60	53	0	62.5	00	-	Nil	NotEligible
15	ETRX	UG		2012	6 <sup>th</sup> Summer-12	60	53	0	83.33	00	-	Nil	NotEligible

### Department wise Data and pass % of2013

Sr.no	course	Level	1 <sup>st</sup> year of approval by council	year	Sem	Sanctioned intake	Cut off marks General quota	% of students passing out with Distinction	% of Students with 1 <sup>st</sup> class	Students placed	Average pay packageRs/year	Students opted for higherstudies	Accreditation status of the course	
1	ETRX	UG		2 <sup>nd</sup>	III <sup>rd</sup>	60	48	Nil	00	-	-	-	No	
2				3 <sup>rd</sup>	V <sup>th</sup>	60	48	Nil	00	-	-	-	-	No
3				4 <sup>th</sup>	VI <sup>th</sup>	60	48	Nil	64.28	Nil	-	-	Nil	No
4				2 <sup>nd</sup>	IV <sup>th</sup>	60	48	Nil	00	-	-	-	-	No
5				3 <sup>rd</sup>	VI <sup>th</sup>	60	48	Nil	52.94	-	-	-	-	No
6				4 <sup>th</sup>	VIII <sup>th</sup>	60	48	Nil	100	8	-	-	Nil	No

S.No.	Course	Level	1 <sup>st</sup> year of approval by Council	Year	Sem	Sanctioned Intake	Cut off marks Generalquota	% of Students Passing out with Distinction	%of Students with 1 <sup>st</sup> Class	Students Placed	Average	Student opted for higher studies	Accreditation status of the course
1	ECE Electronics communications & Engineering	UG			II	III	120	45	NILL	22.22	-	-	NO
2					III	V	120	45	NILL	28.12	-	-	NO
3					IV	VII	120	45	NILL	57.14	NILL	-	NO
4					II	IV	120	45	NILL	16.41	-	-	NO
5					III	VI	120	45	NILL	48.14	-	-	NO
6					IV	VIII	120	45	1.842	100	12	2.4	15

**Department wise Data and pass % of 2014**

Sr. no	course	level	1st year Of approval	year	Sem	Sanctio ned Inta	Cut off marks Ge	% of students passing out with	% of Students with 1st class	Students placed	Average pay package Rs/year	Students opted for higher studies	Accreditation status of the course
1	E T R X	UG		2nd	IIIrd	60	48	Nil	00	-	-	-	No
2				3rd	Vth	60	4	Nil	50	-	-	-	No
3				4th	VIIth	60	4	Nil	00	Nil	-	Nil	No
4				2nd	IVth	60	4	Nil	00	-	-	-	No
5				3rd	VIth	60	4	Nil	50	-	-	-	No
6				4th	VIIIth	60	4	Nil	64.28	Nil	-	Nil	No

S.No	Course	Level	1st year of approval by Council	Year	Sem	Sanctio ned Intake	Cut off marks General q	% of Students Passing out with Distinction	% of Students with 1st Class	Students Placed	Average	Student opted for higher studie	Accre dition status of the course
1	Electro nics comm unication s & Engin eering	UG		II	III	120	45	NIL	12.5	-	-		NO
2				III	V	120	45	NIL	64.71	-	-		NO
3				IV	VII	120	45	NIL	88	NILL	-		NO
4				II	IV	120	45	NIL	34.62	-	-		NO
5				III	VI	120	45	NIL	50	-	-		NO
6				IV	VIII	120	45	NIL	77.27	3	2.4	0	NO

S.No	Course	Level	1st year of approval	Year	Sem	Sanctio ned Intake	Cut off marks	% of Students	% of Student s with	Stu den	Average	Stu den t	Accre dition
1	M.Tech Electro nic(Co mmuni			II	III	24	45	NIL	66.	-	-		NO
2				III	V	24	45	NIL	95.	-	-		NO
3				II	IV	24	45	NIL	85.	-	-		NO
4				IV	VIII	24	45	NIL	10	8	3	0	NO

**Department wise Data and pass % of 2013**

S.No	Course	Level	1st year of approval by council	Year	Sem	Sanctio ned Intake	Cut off marks general quota	% Students passing out with distinction	% Students with first class	Students Placed	Average pay package Rs. /Year	Students opted for higher studies	Accreditation status of the course
1	BE Computer Science & Engineering	UG	2009-10	II	III	60		0	50			NA	NA
2				II	IV	60		0	66.67			NA	NA
3				III	V	60		0	12.5			NA	NA
4				III	VI	60		0	100			NA	NA
5				IV	VII	60		0	37.50	0	NA	NA	NA
6				IV	VIII	60		0	100	0	NA	NA	NA

### Department wise Data and pass % of 2014

S.No	Course	Level	1st year of approval by council	Year	Sem	Sanctioned Intake	Cut off marks general quota	%Students passing out with distinction	% Students with first class	Students Placed	Average pay package Rs. /Year	Students opted for higher studies	Accreditation status of the course
1	BE Computer Science & Engineering	UG	2010-11	II	III	60		0	17.24			NA	NA
2				II	IV	60		0	14.28			NA	NA
3				III	V	60		0	0.07			NA	NA
4				III	VI	60		0	16.67			NA	NA
5				IV	VII	60		0	88.89	0	NA	NA	NA
6				IV	VIII	60		0	100	1	1.8L	NA	NA

### Department wise Data and pass % of 2015

S.No	Course	Level	1st year of approval by council	Year	Sem	Sanctioned Intake	Cut off marks general quota	%Students passing out with distinction	% Students with first class	Students Placed	Average pay package Rs. /Year	Students opted for higher studies	Accreditation status of the course
1	BE Computer Science & Engineering	UG	2011-12	II	III	60		0	40			NA	NA
2				II	IV	60		0	35.25			NA	NA
3				III	V	60		0	35.17			NA	NA
4				III	VI	60		0	29.62			NA	NA
5				IV	VII	60		0	80	2	1.8L	NA	NA
6				IV	VIII	60		0	100	0	NA	NA	NA

### Department wise Data and pass % of 2015

S. No	Course	Level	1 <sup>st</sup> year of approval by council	Year	Sem	Sanctioned intake	Cut off marks General Quota	% of Students passing out with Distinction	% of Students with 1 <sup>st</sup> class	Students placed	Average pay package Rs./year	Students opted for higher studies	Accreditation status of the course
1	M.Tech Computer Science & Engineering	PG	2011-12	2011-12	Sem I	18	50%	0	86.67		NA	NA	NA
2					Sem II	18	50%	0	100		NA	NA	NA
3					Sem III & IV	18	50%	NA	NA	NA	NA	NA	NA

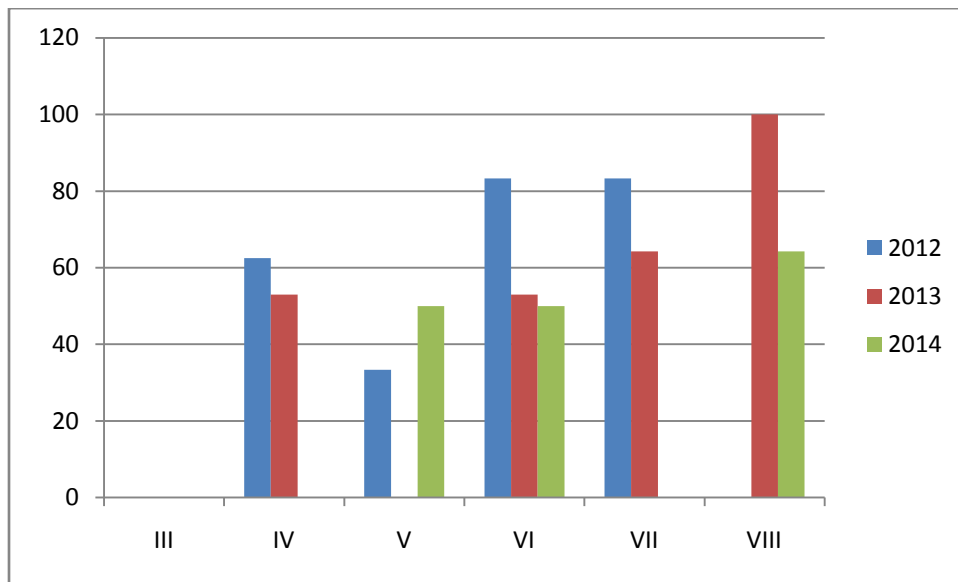
S. No	Course	Level	1 <sup>st</sup> year of approval by council	Year	Sem	Sanctioned intake	Cut off marks General Quota	% of Students passing out with Distinction	% of Students with 1 <sup>st</sup> class	Students placed	Average pay package Rs./year	Students opted for higher studies	Accreditation status of the course
1	ME WCC	PG	2012-13	2012-13	Sem I	24	50%	0	54.55		NA	NA	NA
2					Sem II	24	50%	8	52		NA	NA	NA
3					Sem III	24	50%	28.57	64.28	0	NA	NA	NA
4					Sem IV	24	50%	NA	NA	NA	NA	NA	NA

## Department wise Data and pass % of 2014

S. No	Course	Level	1 <sup>st</sup> year of approval by council	Year	Sem	Sanctioned intake	Cut off marks General Quota	% of Students passing out with Distinction	% of Students with 1 <sup>st</sup> class	Students placed	Average pay package Rs./year	Students opted for higher studies	Accreditation status of the course
1	M.Tech Computer Science & Engineering	PG	2011-12	2011-12	Sem I	18	50%	0	72.73	0	NA	NA	NA
2					Sem II	18	50%	21.42	71.42	0	NA	NA	NA
3					Sem III & IV	18	50%	75	75	1	2.4L	NA	NA

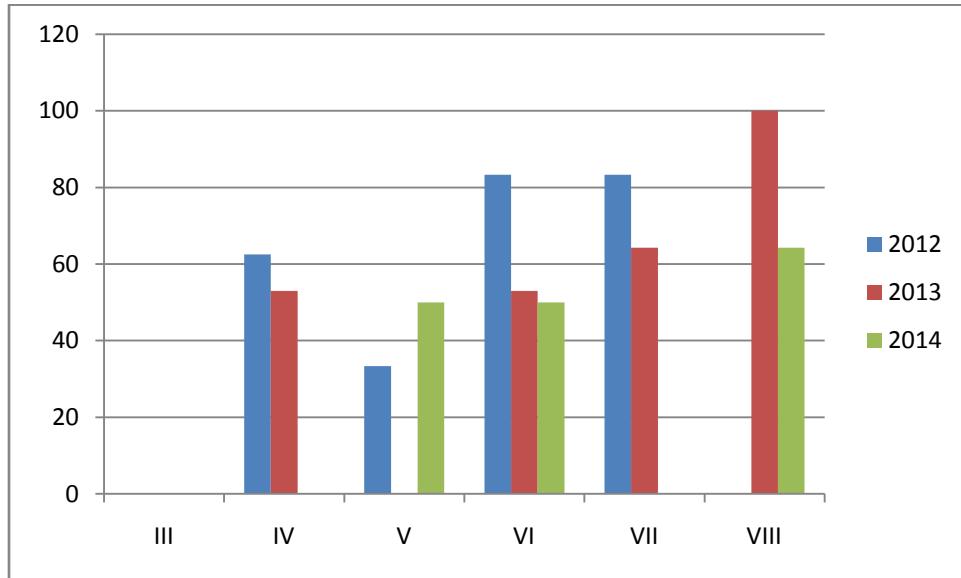
S. No	Course	Level	1 <sup>st</sup> year of approval by council	Year	Sem	Sanctioned intake	Cut off marks General Quota	% of Students passing out with Distinction	% of Students with 1 <sup>st</sup> class	Students placed	Average pay package Rs./year	Students opted for higher studies	Accreditation status of the course
1	ME WCC	PG	2012-13	2012-13	Sem I	24	50%	0	48	0	NA	NA	NA
2					Sem II	24	50%	6.25	62.5	0	NA	NA	NA
3					Sem III	24	50%	30.76	69.23	0	NA	NA	NA
4					Sem IV	24	50%	73	88.88	0	NA	NA	NA

## Department of Electronics and Communication Engineering

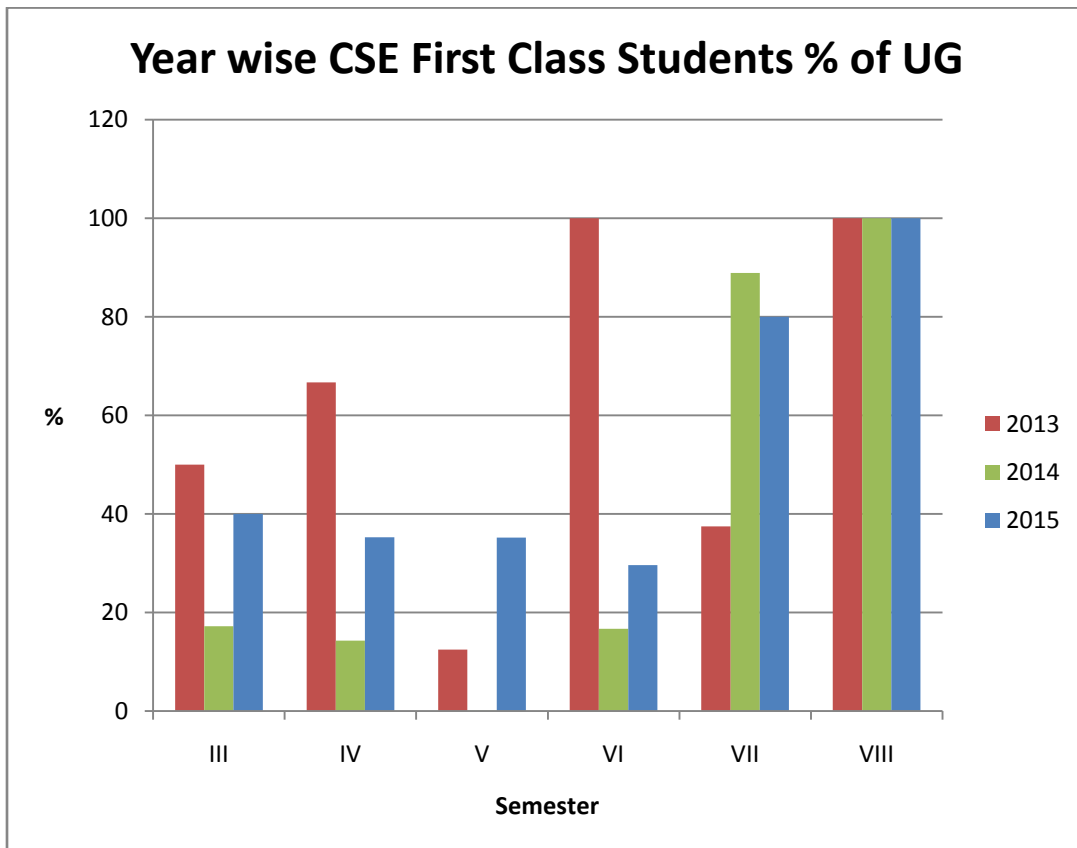


Label x-axis= Semester; y -axis= Percentage Result

## Department of Electronics Engineering

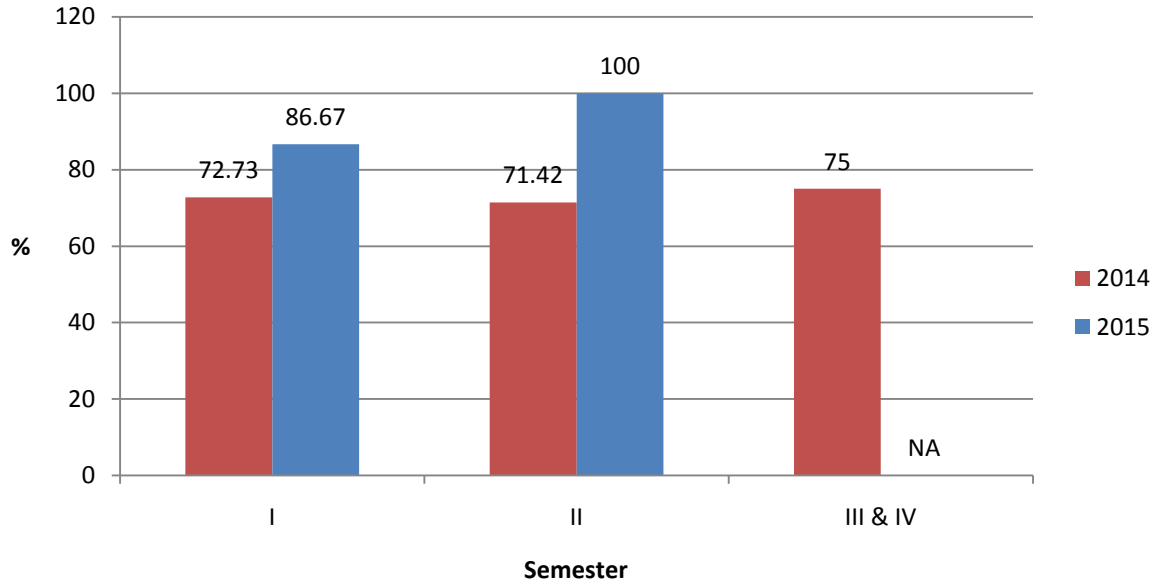


Label x-axis= Semester; y -axis= Percentage Result

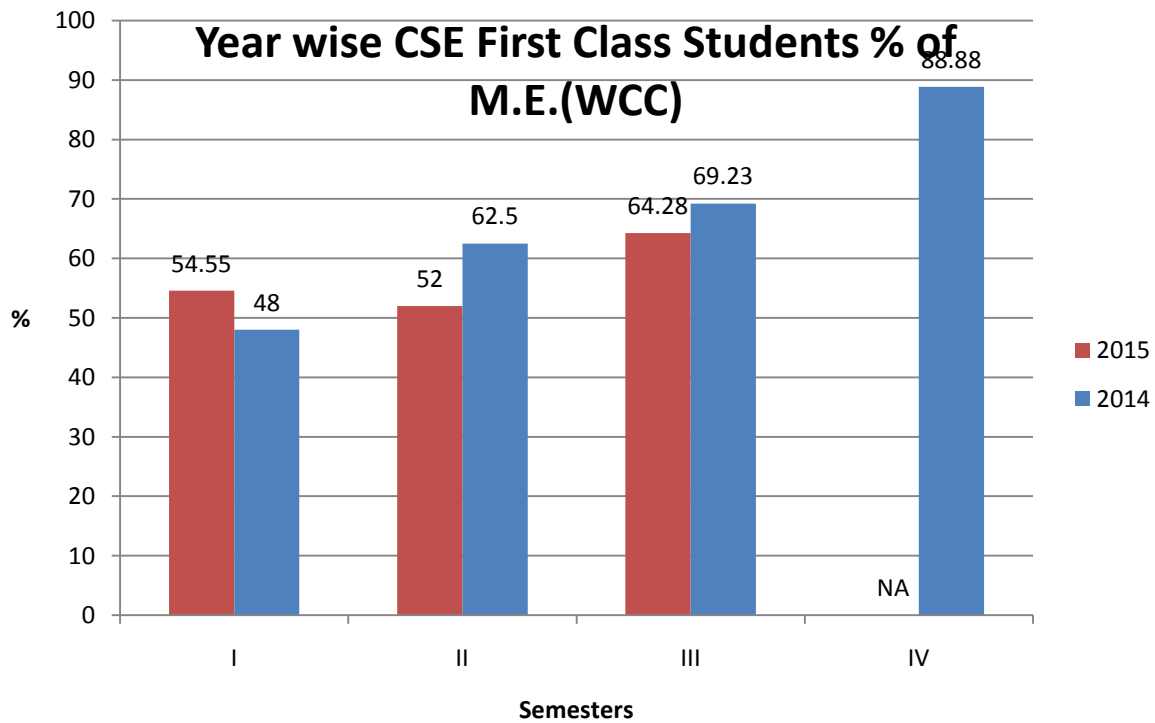




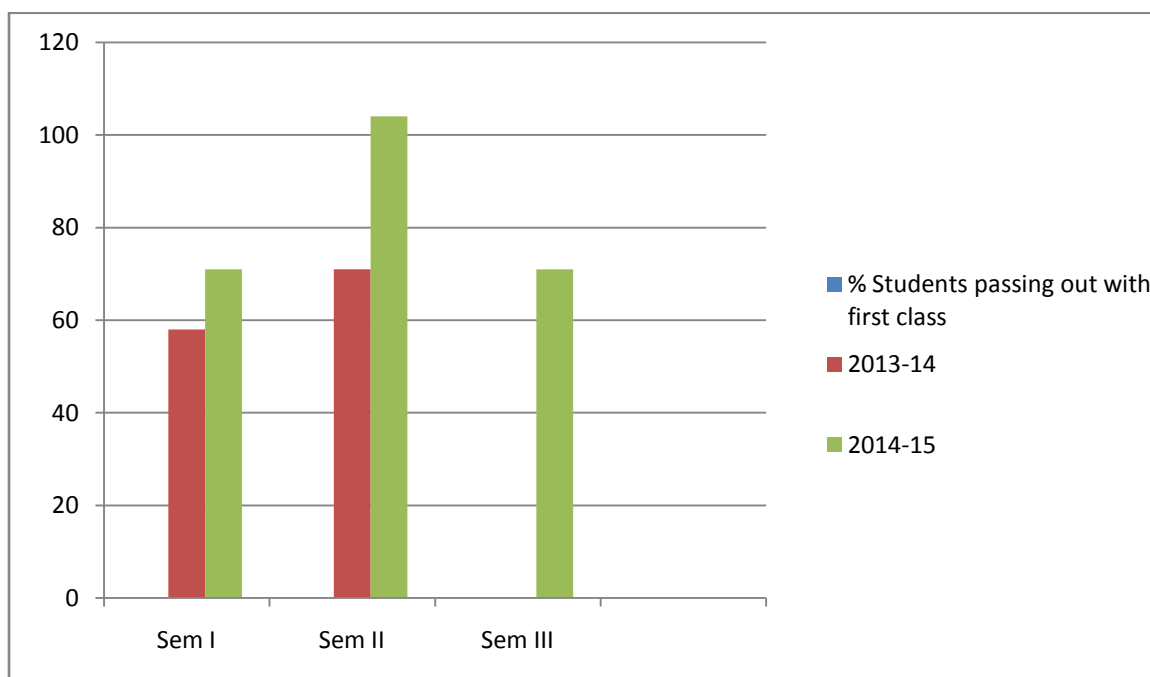
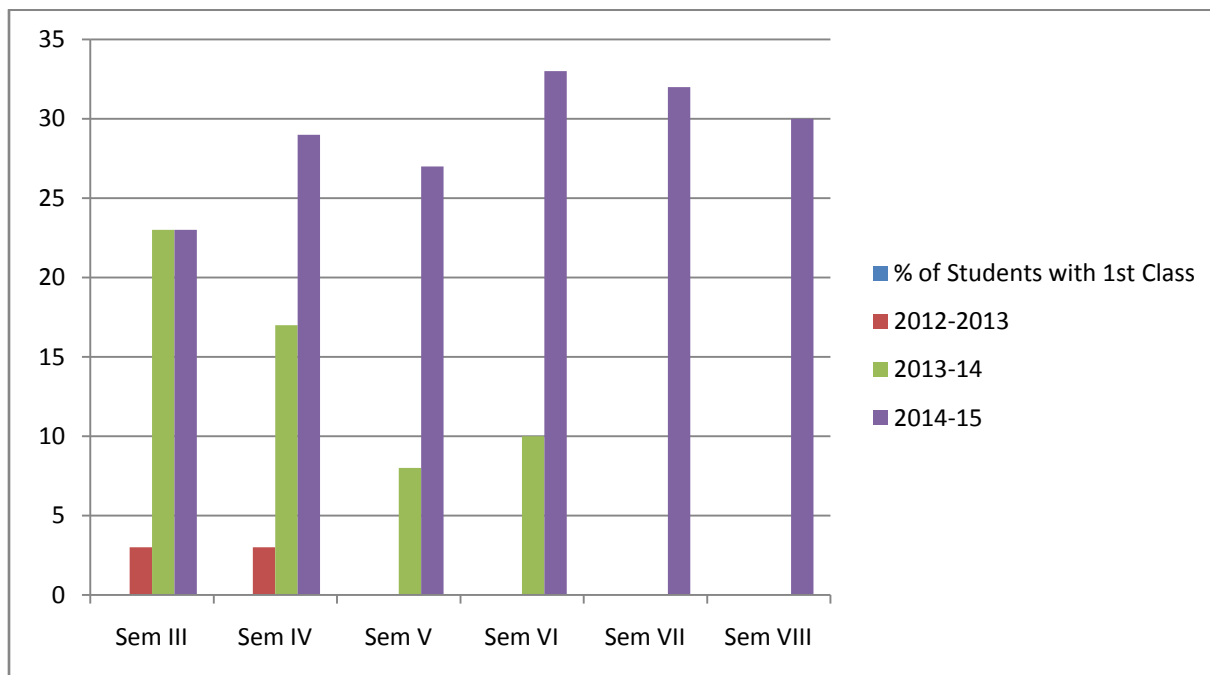
## Year wise CSE First Class Students % of M.TECH(CSE)



## Year wise CSE First Class Students % of M.E.(WCC)

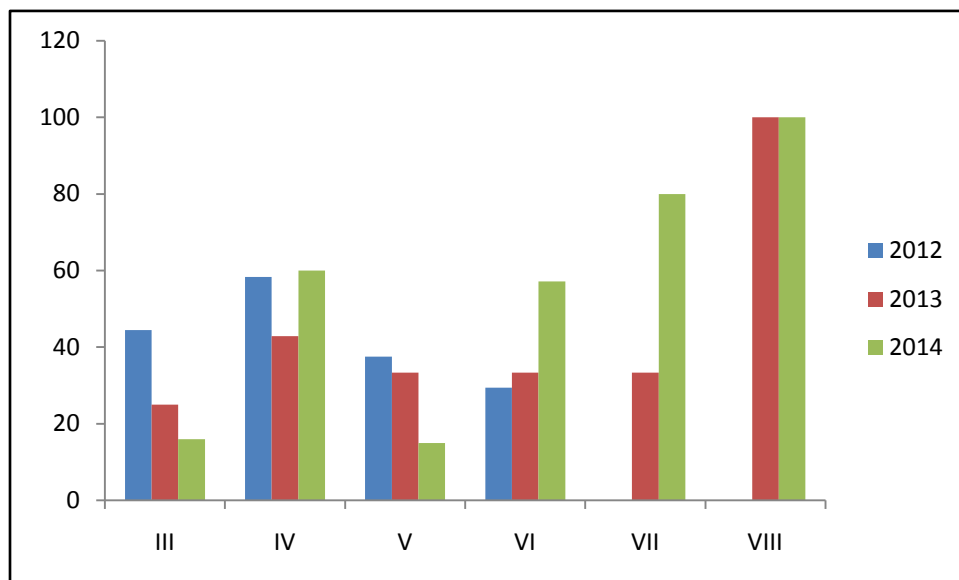


### Bar chart for UG & PG

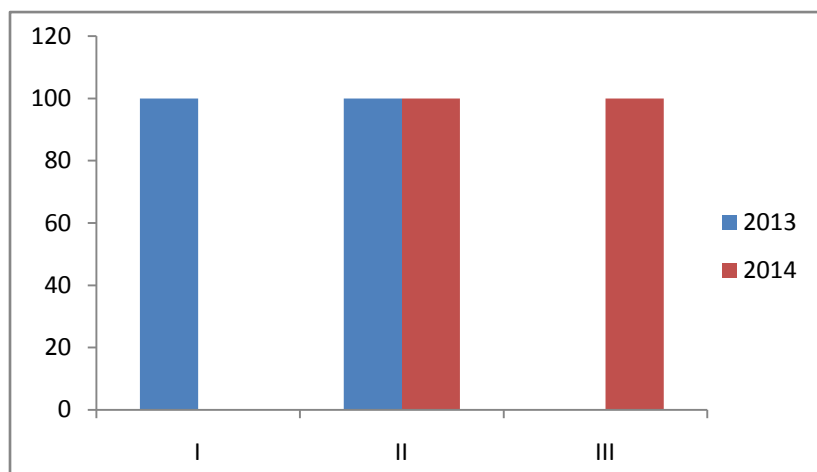


Pass % in First Class Year Wise:

UG:



PG:



**Distinguished Alumni: Department wise**

Name	Branch	Year of Graduation	Employed with	Designation
Sujit Chure	ME	2014	Abhijay Autoparts Pvt.Ltd	Production Engineer
Satish Lambat	ME	2014	Production Engineer	Production Engineer
Raviraj Rathod	ME	2014	Suzlon Energy Ltd	Maintenance Engineer
Pankaj Ladekar	ME	2014	Dhiraj Alloys Steel Pvt.Ltd	Production Engineer
Nishant Nandeshwar	ME	2014	Star Circulips and Engineering Pvt.ltd Nagpur	Design Engineer

Name	Branch	Year of Graduation	Employed with	Designation
Swapnil Kaikade	EE	2013	e-Volve Technologies	Project Engineer
Hitendra Thakare	EE	2013	Alligator Automations	Jr. Control Engineer
Pallavi Manwatkar	EE	2013	Central SwitchGears Pvt. Ltd	Design Engineer
Sachin Thakare	EE	2013	Indo Rama Synthetics (I) Ltd	Trainee Engineer
Manjith Singh	EE	2013	Westin Electromech Ltd	Maintenance Engineer
Ashish Lokhande	EE	2014	Suzlon Energy Ltd	Site Engineer
Sachin Gote	EE	2014	Suzlon Energy Ltd	Site Engineer
Pravin Malviya	EE	2014	SMS Infra Ltd	Site Engineer

Name	Branch	Year of Graduation	Employed with	Designation
Abhishek Mishra	CSE	2015	Horizon Telecom	Telecom Trainee Engineer
Pranali Chinchulkar	CSE	2015	Goel Ganga Infrastructure & Real Estate pvt.	Executive Assistant
Sarang Kolhe	CSE	2014	Hubcity Software pvt. ltd	Software Developer

**Doctoral Courses:** No

**Foreign collaboration/fany:** Nil

**Professional Society Memberships:** ISTE Faculty Chapter

CSI Students Chapter

**Professional Activities:** 1) "Staff Development Program" On Skill Enhancement.

2) "Technogath" (National Level Project Completion).

3) "Anveeksha" (A State Level Technical Event).

4) "I-Robotricks" (Two Days National Workshop on Robotricks Held In Association with ITI, Delhi.

5) Entrepreneurship Development Cell.

6) CSI Golden Tech-Bridge (A Computer Literacy Program).

**Consultancy Activities:** Nil

**Grants Fetched:** STTP for Faculty is approved by ISTE in 2014

Proposals are pending with AICTE / DST/ISTE under following category

i) FDP (1 Nos.)

**Departmental Achievements:** STTP on "Advances in Algorithm, Data Mining & Pervasive Computing"

Two Days Workshop on "Computer Security, Networking And Program"

Two Days Workshop on "Linux Programming an Cloud Computing"

Workshop on "Advanced Dataware Housing And Business Intelligence Capabilities "

Workshop on "Image Development "

Two Days Workshop on "Matlab"

3<sup>rd</sup> position in RTMNU, amongst 59 colleges in university result of BE First Year Summer-2012

## 9. faculty members in departmental wise

### Computer Science & Engg.

Sr.No.	Name Of Faculty	Qualification	Designation	Regular/ Adhoc
1	Mr. Yogesh Bhute	M.Tech	Assistant Professor	Regular
2	Ms. Sonal Honale	M.Tech	Assistant Professor	Regular
3	Mr. Deepak Kapghate	M.Tech	Assistant Professor	Regular
4	Mr. Pooja Chaware	M.Tech	Assistant Professor	Regular
5	Ms. Kiran Gotmare	M.Tech	Assistant Professor	Regular
6	Ms. Vidya Bodhe	M.E.	Assistant Professor	Regular
7	Mr. Gajanan Patle	M.Tech	Assistant Professor	Adhoc
8	Mr. Abhimanyu Dutonde	M.Tech	Assistant Professor	Adhoc
9	Ms. Mayuri Bamnote	M.Tech	Assistant Professor	Adhoc
10	Ms. Prachi Gawali	M.Tech	Assistant Professor	Adhoc
11	Mr. Sumit Kanoje	M.Tech	Assistant Professor	Visiting
12	Mr. Aniket Uprikar	BE	Assistant Professor	Visiting
<b>PG FACULTY</b>				
1	Ms. Pragati Patil	M.Tech	Assistant Professor	Regular
2	Ms. Vaishali Khobragade	M.Tech	Assistant Professor	Regular
3	Mr. Raghav Purankar	M.Tech	Assistant Professor	Visiting

<b>2) Electrical Engineering</b>				
<b>Sr.No.</b>	<b>Name Of Faculty</b>	<b>Qualification</b>	<b>Designation</b>	<b>Regular/ Adhoc</b>
<b>Regular</b>				
1	Mr. Ravi Gulhane	M.Tech	Assistant Professor	Regular
2	Ms. Sneha Tibude	M.Tech	Assistant Professor	Regular
3	Mr. Shashikant Kewte	M.Tech	Assistant Professor	Regular
4	Ms. Monika Bawariya	M.Tech	Assistant Professor	Regular
5	Mr. Rohit Kanojiya	M.Tech	Assistant Professor	Regular
6	Mr. U.V. Reddy	M.Tech	Assistant Professor	Regular
7	Ms. Manjari Asutkar	M.Tech	Assistant Professor	Regular
8	Ms. Priyanka Dukare	M.Tech	Assistant Professor	Regular
9	Mr. Ameya Kumar	M.Tech	Assistant Professor	Regular
10	Ms. Pooja Sahastrabudhe	M.Tech	Assistant Professor	Regular
11	Mr. Nilesh Kamdi	M.Tech	Assistant Professor	Regular
12	Mr. Prasanna Pothi	M.Tech	Assistant Professor	Regular
13	Ms. Shrushti Dixit	M.Tech	Assistant Professor	Adhoc
14	Mr. Vaibhav Raut	M.Tech	Assistant Professor	Adhoc
15	Ms. Kishori Rewatkar	M.Tech	Assistant Professor	Adhoc
16	Ms. Trupti Gajbhiye	M.Tech	Assistant Professor	Adhoc
17	Mr. Imran Ahmad	M.Tech	Assistant Professor	Adhoc
18	Ms. Sonali Moon	M.Tech	Assistant Professor	Adhoc
19	Ms. Tejaswini Honade	M.Tech *	Assistant Professor	Adhoc
20	Mr. Mahesh Chavhan	M.Tech	Assistant Professor	Visiting
21	Mr. Manoj Chavhan	M.Tech	Assistant Professor	Visiting
22	Ms. Ayueshree Wasnik	B.E.	Assistant Professor	Visiting
23	Ms. Priti Manwatkar	BE	Assistant Professor	Visiting
24	Ms. Snehal Gatkine	BE	Assistant Professor	Visiting

<b>PG FACULTY</b>				
1	Ms. Bushra Khan	M.Tech	Assistant Professor	Regular
2	Ms. Sulbha Kamble	M.Tech	Assistant Professor	Regular
3	Ms. Priyanka Asalwar	M.Tech	Assistant Professor	Adhoc
4	Ms. Priti Kontamwar	M.Tech	Assistant Professor	Visiting

<b>3) Mechanical Engineering</b>				
<b>Sr.No.</b>	<b>Name Of Faculty</b>	<b>Qualification</b>	<b>Designation</b>	<b>Regular/ Adhoc</b>
1	Dr. Deepak Gupta	P.hd	Assistant Professor	Regular
2	Mr. Ravindra Dharpure	M.Tech	Assistant Professor	Regular
3	Mr. Ravindra Gandhe	M.Tech	Assistant Professor	Regular
4	Ms. Dipali Bhojar	M.Tech	Assistant Professor	Regular
5	Mr. Swapnil Thanekar	M.Tech	Assistant Professor	Regular
6	Mr. Praful Randive	M.Tech	Assistant Professor	Regular
7	Mr. Vivek Patil	M.Tech	Assistant Professor	Regular
8	Mr. Ranjit Mahakalkar	M.Tech	Assistant Professor	Regular
9	Mr. Abhinesh Aswar	M.Tech	Assistant Professor	Regular
10	Mr. Rushikesh Padwe	M.Tech	Assistant Professor	Regular
11	Mr. Suyog Jugare	M.Tech	Assistant Professor	Regular
12	Mr. Ashish Fande	M.Tech	Assistant Professor	Regular
13	Ms. Vidya Pardeshi	M.Tech	Assistant Professor	Adhoc
14	Mr. Prashant Bansod	M.Tech	Assistant Professor	Adhoc



15	Mr. Mahesh Gadekar	M.Tech	Assistant Professor	Adhoc
16	Mr. Chetan Gawande	M.Tech	Assistant Professor	Adhoc
17	Mr. Dushant Waghmare	M.Tech	Assistant Professor	Adhoc
18	Mr. Ramkrishna Gondane	M.Tech *	Assistant Professor	Adhoc
19	Mr. Akash Kinkar	B.E.	Assistant Professor	Adhoc
20	Mr. Sujit Chure	B.E.	Assistant Professor	Visiting
21	Mr. Mrunal Ukey	B.E.	Assistant Professor	Visiting
22	Mr. Digambar Bhoyar	BE	Assistant Professor	Visiting
23	Mr. Rahul Bansod	BE	Assistant Professor	Visiting
24	Mr. Sameer Khan	BE	Assistant Professor	Visiting
<b>Mechanical Engineering Design PG</b>				
1	Mr. Vivek Padole	M.Tech	Assistant Professor	Regular
2	Mr. Rahul Karamankar	M.Tech	Assistant Professor	Regular
3	Mr. Swapnil Kurekar	M.Tech	Assistant Professor	Adhoc
4	Mr. Sagar Bagde	M.Tech	Assistant Professor	Visiting

### GENERAL ENGINEERING

Sr.No.	Name Of Faculty	Qualification	Designation	Faculty Type
1	Mr. Amit Choudhary	M.Sc. (Chemistry)	Assistant Professor	Regular

2	Ms. Preeti Kakde	M.Sc. (Chemistry)	Assistant Professor	Regular
3	Mr. Dayal Roy	M.Sc. (Phy)	Assistant Professor	Regular
4	Mr. Santosh Singh	M.Sc. (Maths)	Assistant Professor	Regular
5	Ms. Manjushree Muley	M.Sc. (Maths)	Assistant Professor	Regular
6	Mr. Kapil Raut	M.Tech Civil	Assistant Professor	Regular
7	Ms. P. Lata Reddy	M.Sc. (Maths)	Assistant Professor	Adhoc
8	Ms. Vedahi Alode	M.Sc. (Maths)	Assistant Professor	Adhoc
9	Mr. Sunil Gowardhan	M.A. English	Assistant Professor	Adhoc
10	Ms. Sneha Atkar	M.A. English	Assistant Professor	Adhoc
11	Mr. Sameer Khan	Civil	Assistant Professor	Regular
12	Ms. Bharti Kale	Sports	Assistant Professor	Adhoc
13	Mr. Abhijit Misal	M.Tech (Mechanical)	Assistant Professor	Adhoc
14	Ms. Pooja Chimurkar	M.Tech (Electrical )	Assistant Professor	Adhoc
15	Ms. Prachi Badhiye	M.Tech (CSE)	Assistant Professor	Adhoc
16	Mr. Ashish Bante	B.E.	Assistant Professor	Adhoc
17	Mr. Bhushan Gondekar	M.Tech* (Mechanical )	Assistant Professor	Adhoc
18	Mr. Digambar Bhoyar	B.E.	Assistant Professor	Adhoc
19	Ms. Kalyani Deotale	B.E.(CSE)	Assistant Professor	Adhoc
20	Mr. Pravin Malviya	B.E.	Assistant Professor	Adhoc

#### 14. Fees Structure 2016-17

Admission quota Entrance	test/admission criteria	UG	PG	Fees in rupees Number of Fee	Wavers offered	Admission calendar	PIO quota
CET / AIEEE	HSSC & CET	CSE		90,000/-	Nil	As per the DTE, MS,	NA

	<b>Score</b>					<b>Mumbai Notification</b>	
CET / AIEEE	HSSC & CET Score	IT		90,000/-	Nil	As per the DTE, MS, Mumbai Notification	NA
CET / AIEEE	HSSC & CET Score	ECE		90,000/-	Nil	As per the DTE, MS, Mumbai Notification	NA
CET / AIEEE	HSSC & CET Score	ETRX		90,000/-	Nil	As per the DTE, MS, Mumbai Notification	NA
CET / AIEEE	HSSC & CET Score	Electrical		90,000/-	Nil	As per the DTE, MS, Mumbai Notification	NA
CET / AIEEE	Graduation & GATE Score	Mechanical		90,000/-	Nil	As per the DTE, MS, Mumbai Notification	NA
GATE/ Institute Level	Graduation & GATE Score		M. Tech CSE	85000/-	Nil	As per the DTE, MS, Mumbai Notification	NA
GATE/ Institute Level	Graduation & GATE Score		M. Tech ECE	85000/-	Nil	As per the DTE, MS, Mumbai Notification	NA
GATE/ Institute Level	Graduation & GATE Score		M. Tech IPS	85000/-	Nil	As per the DTE, MS, Mumbai Notification	NA
GATE/ Institute Level	Graduation & GATE Score		M. Tech MED	85000/-	Nil	As per the DTE, MS, Mumbai Notification	NA
GATE/ Institute Level	Graduation & GATE Score		M. E WCC	85000/-	Nil	As per the DTE, MS, Mumbai Notification	NA

## 15. Infrastructure information

Within a span of three years Abha Gaikwad-Patil College of Engineering is proud to provide every facility required for ensuring a healthy educational environment. We have ultra-modern laboratories with wi-fi connection throughout the campus, ventilated classrooms, each having audio-visual aids. Seminar hall with well-equipped infrastructure. Gymnasium for students and staff. A healthy and hygienic cafeteria catering to students, staff and guests. For intellectual food, the college houses a spacious library accommodating more than 12000 books under various technical and non-technical heads. Apart from personal cabins provided to most teaching staff, regular meetings are conducted at specially designed conference hall. Electricity backup is taken care of by generators efficient to undertake supply load.

## Photo Gallery



**ADMINISTRATIVE, STUDENT & ACCOUNT SECTION STAFF**



**BLOOD DONATION CAMP CONDUCTED BY AGPCE NSS UNIT**



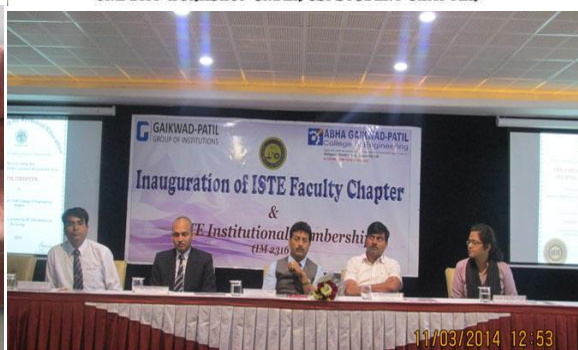
**DIGNITARIES PRESENT DURING INUGURATION OF EDC CELL IN AGPCE**



**ONE DAY WORKSHOP UNDER CSI STUDENT CHAPTER**



**A FREE HEALTH CHECKUP CAMP ORGANISED BY AGPCE NSS UNIT**



**INAUGURATION OF ISTE FACULTY CHAPTER**



INDUSTRY VISIT AT IT NETWORKZ, NAGPUR



INDUSTRY VISIT AT GEN-X CODER, NAGPUR



STUDENTS DURING KITE FLYING COMPETITION



SEMINAR HALL



TOPPER STUDENT FACILITATION BY THE STAR CAST OF MOVIE "SONALI CABLE"



CSE FORUM PRESIDENT WELCOME SRI. SRIRAM KULKARNI, PROGRAM OFFICER, MCD, NAGPUR



TREE PLANTATION BY THE HAND OF DR. R. TUGNAYAT & PROF. SANDIP GAIKWAD UNDER AGPCE NSS UNIT



DR. DURGA TOSNIWAL & COLLEGE DIGINITARIES PRESENT DURING NATIONAL WORK ON "ADVANCED IN DATA MINING" HELD BY DEPT. OF CSE

**Name of the information Officer for RTI : Dr. Anjali Patil-Gaikwad**  
**Designation: Professor**  
**Phone number & STD code: +91-9823376367**  
**FAX number with STD code: 0712-2240656**  
**Email: anjalipatilgaikwad@gmail.com**